

Customer :

customer

Customer part :

customer part

Comment :

Comment

S1=2.27

S2=2.57

Tmax=409

Tp S2=448.0

PI=0.47

HI=120

Sample =1798.30

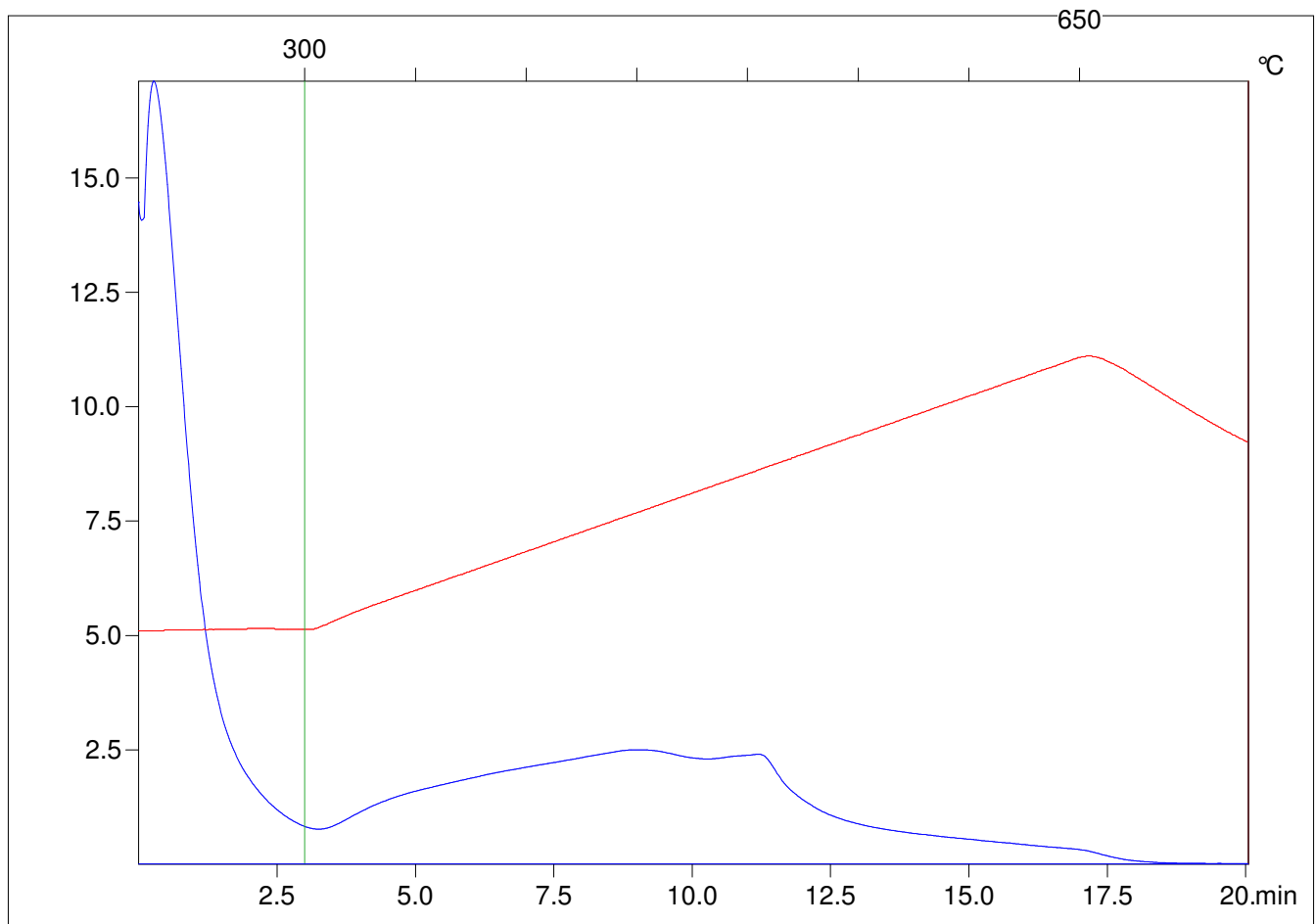
Method =Bulk Rock

Cycle=Basic

KFID(10*9)=1444

Qty =70.4

TOC=2.15



C:\VINC\PK4_1792\PK007.R00 : FID pyrolysis graphic

State

Pyro Status

Oxi Status